

BUILDING THE FUTURE OF CHRISTCHURCH SQUASH TOGETHER.



Christchurch
Squash Club

CHRISTCHURCH SQUASH CLUB INC.



After the 2011 earthquakes the Christchurch Squash Club's facility was damaged such that it was uneconomic to repair or reinstate the facility on the current site.

Through the insurance payout, and other funds, this situation has given way for an amazing opportunity to create and build a new facility. With this comes the opportunity to create something that will not only support the current structure of the Christchurch squash community, but will create growth and drive the sport in the future.

Located at the Cashmere Club, this new 'state of the art' advanced facility will have features such as:

1. Climate control
2. High tech live video streaming on court
3. Interactive squash technology
4. 8 ASB singles and 4 doubles courts
5. Glass backed courts
6. 100% of National Building Standard



Some of the key feature benefits are:

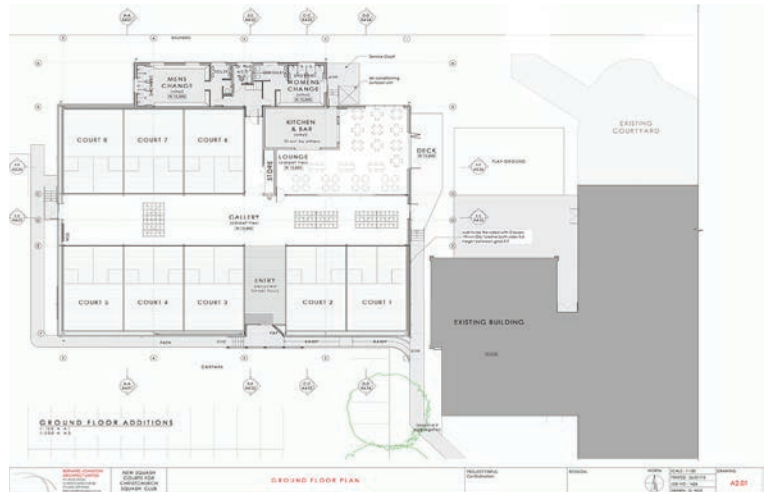
Creation of a working partnership with the Cashmere Club which will, through provision of eating and family facilities, be the perfect marriage for both parties.

The venue will attract national and international events, which will be advantageous to revenue streams and promotion of the sport. It will bring the Christchurch area into focus in the squash world, not to mention inspiring youngsters to take up the sport.

Provision of a doubles court facility, unique in Christchurch.

Scope through scale to grow membership and safeguard the future of the sport in Canterbury and NZ

Increased revenue will allow investment into the sport e.g. junior development programs.



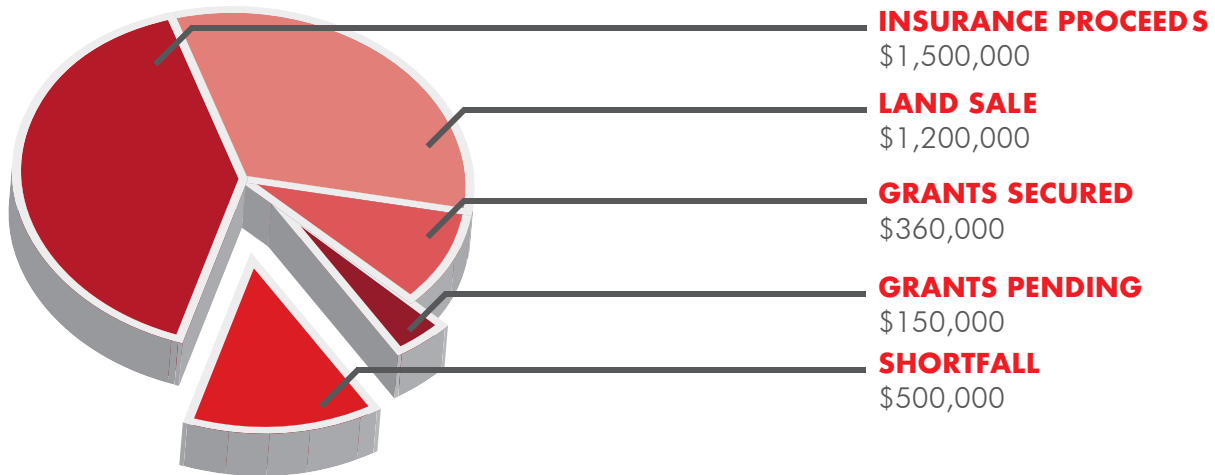
This project team has been working in association with CBRE (project manager), Bernard Johnston Architects Limited and engineers Kirk Roberts and the status of the project is shown below. It is our objective to sign the building contract at our “Match Point” evening on 17th May to allow us to set a completion date for 1st Dec 2018

FINANCIALS

The total cost of the project is estimated, as of 1st May, as \$3.71m.

A large part of the funding has been sourced as you can see below. The bulk of the requirement is sourced via EQC and land sales, Squash NZ. Other funding grants have provided \$350,000 However there remains a gap, of \$500,000 So how can we bridge this gap, sign the building contracts and begin our journey towards this our new exciting venue?

WHERE DOES THE \$3.71M COME FROM?



Simply, we need your help and support. Therefore we invite **YOU** and a select group from the squash community to become **FOUNDATION MEMBERS**



Foundation membership

We need a new Squash venue in Christchurch, to replace what was lost in the Earthquake. We want to grow squash by investing in development of juniors, hosting international tournaments and raising the visibility of squash as a premium sport. Funds raised through Foundation Membership will bridge our funding gap, ensuring that we have world class facilities. Foundation membership funds in excess to building cost requirements will be dedicated to squash development programs.

The foundation membership is: \$5000.00

This includes

10 Years

Christchurch Squash
Membership

Name engraved

on the glass back of the
new courts

Preferential Seating
for Major Events

We have a minimum target of 100 Foundation Memberships to bridge our financial gap. We wish to reach this target by Thursday 17th May so that on that "Match Point" evening we can announce the name of the facility and sign the building contract.

There are several ways to become a Foundation Member:



1. Online. (link attached). Complete the simple google form and our membership team will manage it from there
2. Complete the document in this booklet and
 3. Scan / photograph or simply provide details by email and return to jen@bothyevents.com
 4. Attend and bring to our "Match Point" evening on 17th May
5. By phone. Ring Jen on 02102307322

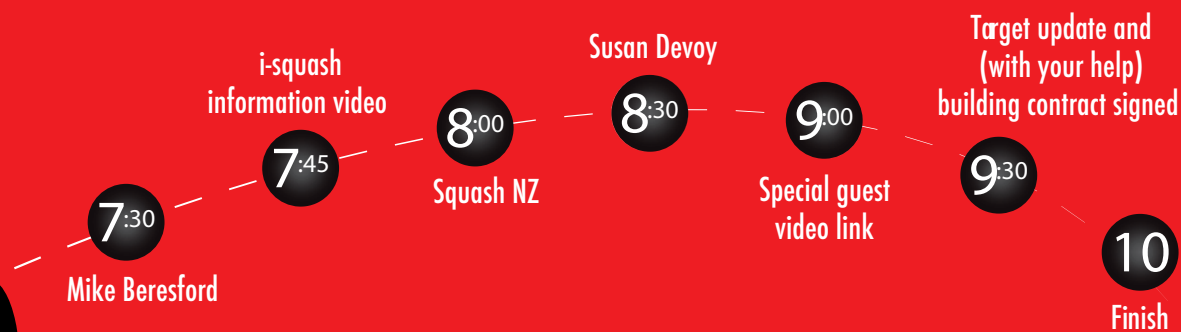
Foundation Membership fees will go to Malley and Co trust account. Please reference your name, and 1115985-5.

You are invited...

MATCH POINT

Come along and hear more about our proposal, and the facility itself. Complimentary nibbles will be available. We are lucky enough to have a selection of speakers who will talk for approx. 10mins each. In between speakers there will be lots of opportunity to network and relax with a drink.

Venue  The Cashmere Club Lounge 50 Colombo St, Somerfield, Christchurch	Date  Thursday 17th May 2018	Time  7:00pm to 10:00pm
--	---	--



For any information please contact Mike Beresford on 0274331346 or Jen Duncan on 02102307322